



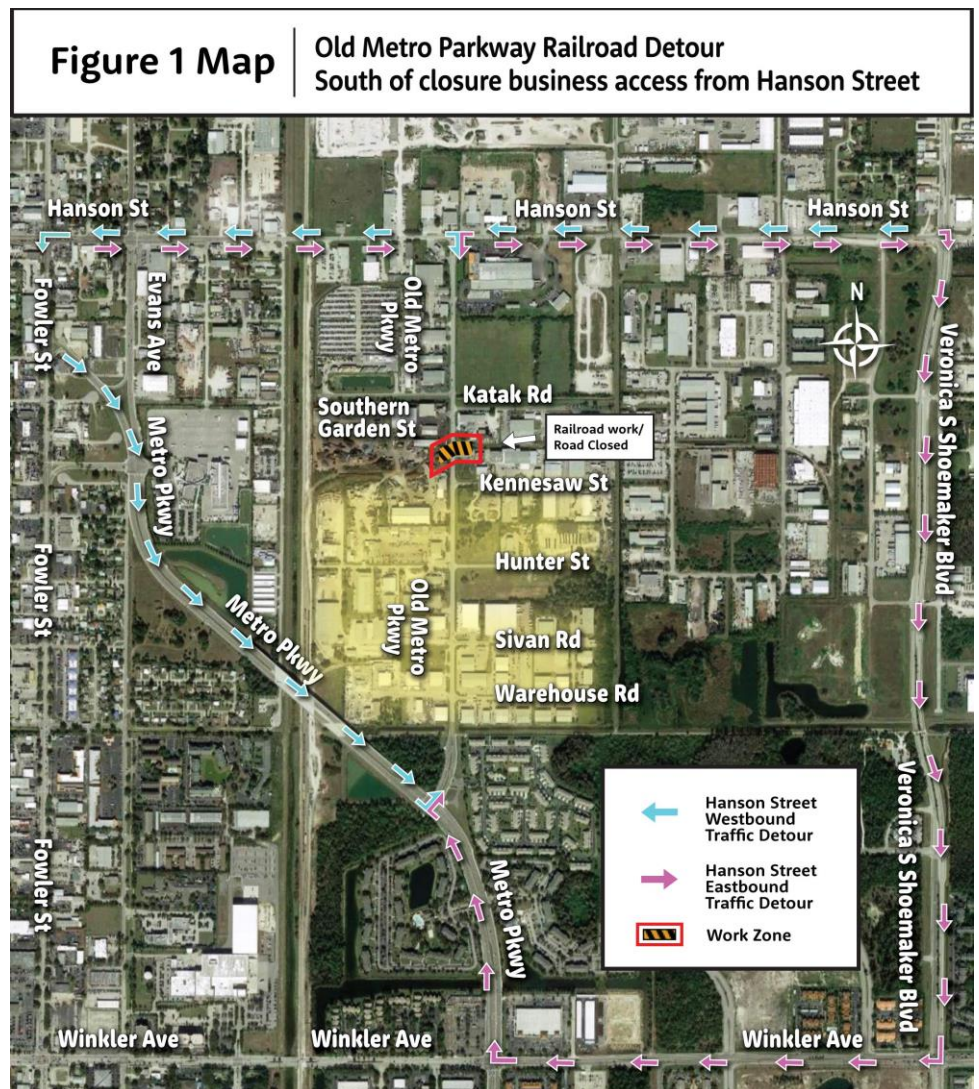
# Old Metro Parkway Rebuild Project From Warehouse Road to Hanson Street

## Seminole Gulf Railway railroad track rehabilitation on Old Metro Parkway

**Beginning 5 a.m. on Monday, September 14, 2020 through Sunday, September 20, Old Metro Parkway will be closed at the railroad crossing while Seminole Gulf Railway rehabilitates the railroad track.** This closure will remain in place during daytime and nighttime/overnight hours until work is completed. Old Metro Parkway on the north and south side of the closed railroad crossing will be open for business access only. To bypass the closed railroad area, through motorists may use the following detours:

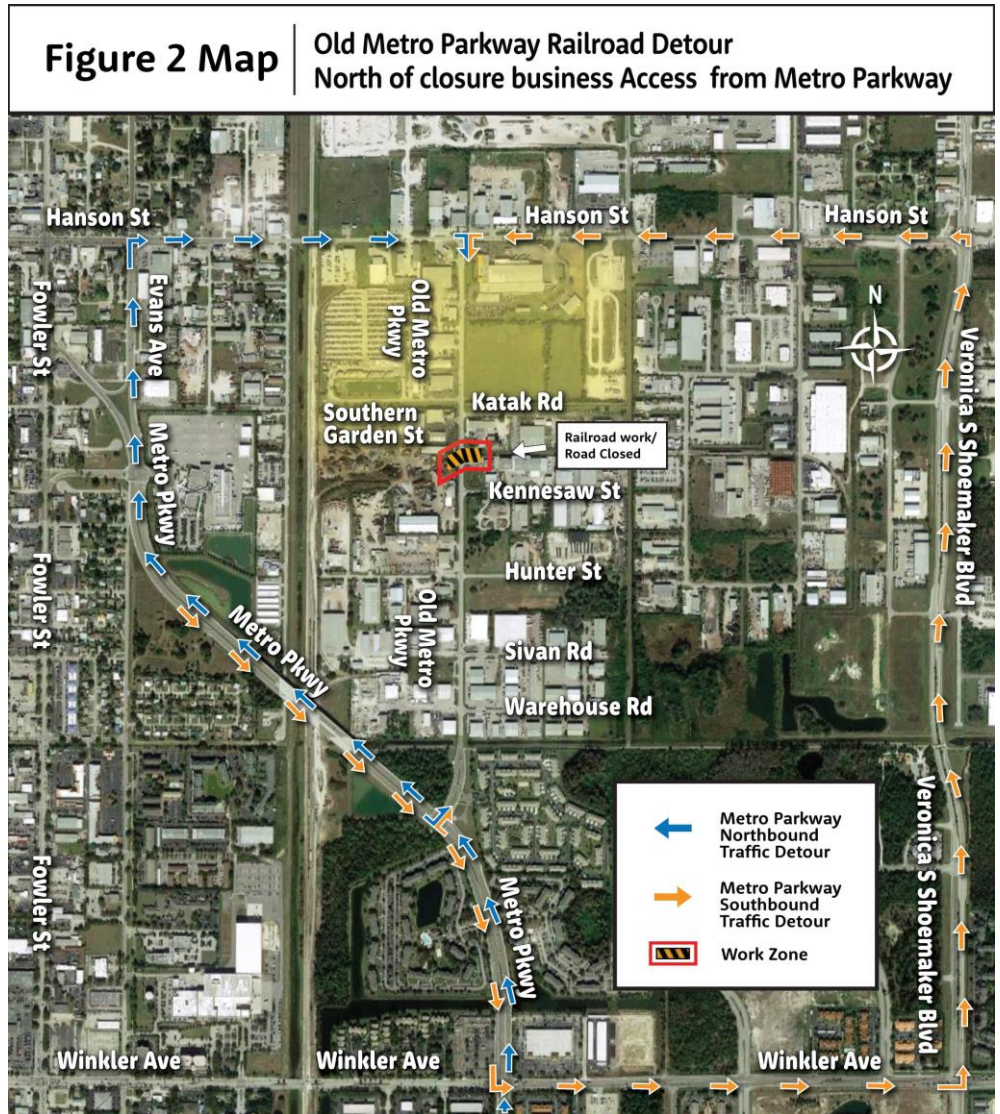
From Hanson Street  
(see Figure 1 Map)

- Motorists traveling east on Hanson Street wanting to access Old Metro Parkway south of the closed railroad area should turn south on Veronica S. Shoemaker Boulevard, west on Winkler Avenue, north on Metro Parkway, and north on Old Metro Parkway.
- Motorists traveling west on Hanson Street wanting to access Old Metro Parkway south of the closed railroad area should turn south on Fowler Street, south on Metro Parkway, and north on Old Metro Parkway.



From Metro Parkway  
(see Figure 2 Map)

- Motorists traveling north on Metro Parkway wanting to access Old Metro Parkway north of the closed railroad area should turn east on Hanson Street, and south on Old Metro Parkway.
- Motorists traveling south on Metro Parkway wanting to access Old Metro Parkway north of the closed railroad area should turn east on Winkler Avenue, north on Veronica S. Shoemaker Boulevard, west on Hanson Street, and south on Old Metro Parkway.



Motorists, pedestrians and bicyclists should use extreme caution. This schedule is subject to change due to inclement weather and unforeseen underground conditions.

For additional information or assistance with alternate routes, please contact the City's public information consultant for the project, Cella Molnar & Associates, Inc. at 239-337-1071 or via e-mail to [info@OldMetroRebuild.com](mailto:info@OldMetroRebuild.com).